

## **One Year Retention Rates for Fall Entrants 1998-2004 Cohorts**

This report examines one year retention rates by student entry type. First time freshmen are reported in full and part time groups as are transfers with freshman status (0-29 credits) and transfers with sophomore or higher status (30 or more credits on entry and identified as “Other Transfer” in this report). The overall retention rates by student entry type and year are presented in Table 1 on the following page. More detailed tables by race/ethnicity and college begin on page 5. Students are counted as retained if they return for the second fall or in the case of advanced transfer students have graduated by then.

### **Notes on All Tables**

- Native Americans are not reported because of small N-size, but they are included in the “All UMB” rates as are those with missing race/ethnicity. Any other subgroups of 5 or less are included in the “All UMB” rates but are marked with an “X” in the appropriate cell to preserve privacy.
- Cape Verdeans are not reported in a stand alone category because of small N-size. They are reported as part of the Black non-Hispanic (Black NH) category as they are for national reporting.
- Freshman or transfer status is determined from the Admissions File
- Freshman or higher level class standing is determined by the number of transfer credits noted in the Admissions File.
  - This does not always match the credits at the beginning of the student’s first semester as noted in the Enrollment File.
- CPCS students are reported in the “First Time Freshmen” and “All Transfer Students” categories but not in the transfer categories that are reported by entry level because of difficulties ascertaining the entry level of CPCS transfer students. All CPCS students are counted as full time.

**Table 1: Retention Rate Summary Table by Entry Level**

	Fall 1998	Fall 1999	Fall 2000	Fall 2001	Fall 2002	Fall 2003	Fall 2004	Fall 2003 Cohort Size	Fall 2004 Cohort Size	One Year % Change in Cohort Size	One Year Change in Retention Rate
First Time Full Time Freshmen	67.4%	69.6%	69.1%	69.6%	69.7%	71.1%	<b>70.4%</b>	567	<b>521</b>	-8.1%	-0.7%
Part Time Freshmen	43.6%	40.5%	46.0%	56.1%	45.4%	51.2%	<b>52.3%</b>	43	<b>44</b>	2.3%	1.1%
Full Time Transfer Freshmen	70.6%	61.3%	62.3%	65.8%	67.2%	68.0%	<b>68.6%</b>	367	<b>274</b>	-25.3%	0.6%
Part Time Transfer Freshmen	56.6%	53.0%	53.4%	52.6%	50.5%	56.1%	<b>59.3%</b>	135	<b>81</b>	-40.0%	3.2%
Full Time Other Transfer	74.2%	76.7%	74.7%	71.1%	74.2%	71.3%	<b>75.6%</b>	495	<b>570</b>	15.2%	4.3%
Part Time Other Transfer	65.5%	58.7%	61.7%	59.0%	59.5%	57.6%	<b>62.0%</b>	262	<b>208</b>	-20.6%	4.4%

### Overview of Retention by Entry Status

The first time full time freshman retention rate has been relatively stable since 1998, ranging from a low of 67.4% in 1998 to a high of 71.1% in 2003 with a combined rate of 69.5% over the period. The rates for first time part time freshmen have been considerably more volatile and much lower over the same period. Their low was 40.5% in 1999 with a high of 56.1% in 2001 and a combined rate of 46.7% over the entire period. The difference in retention rates between full and part time freshmen was statistically

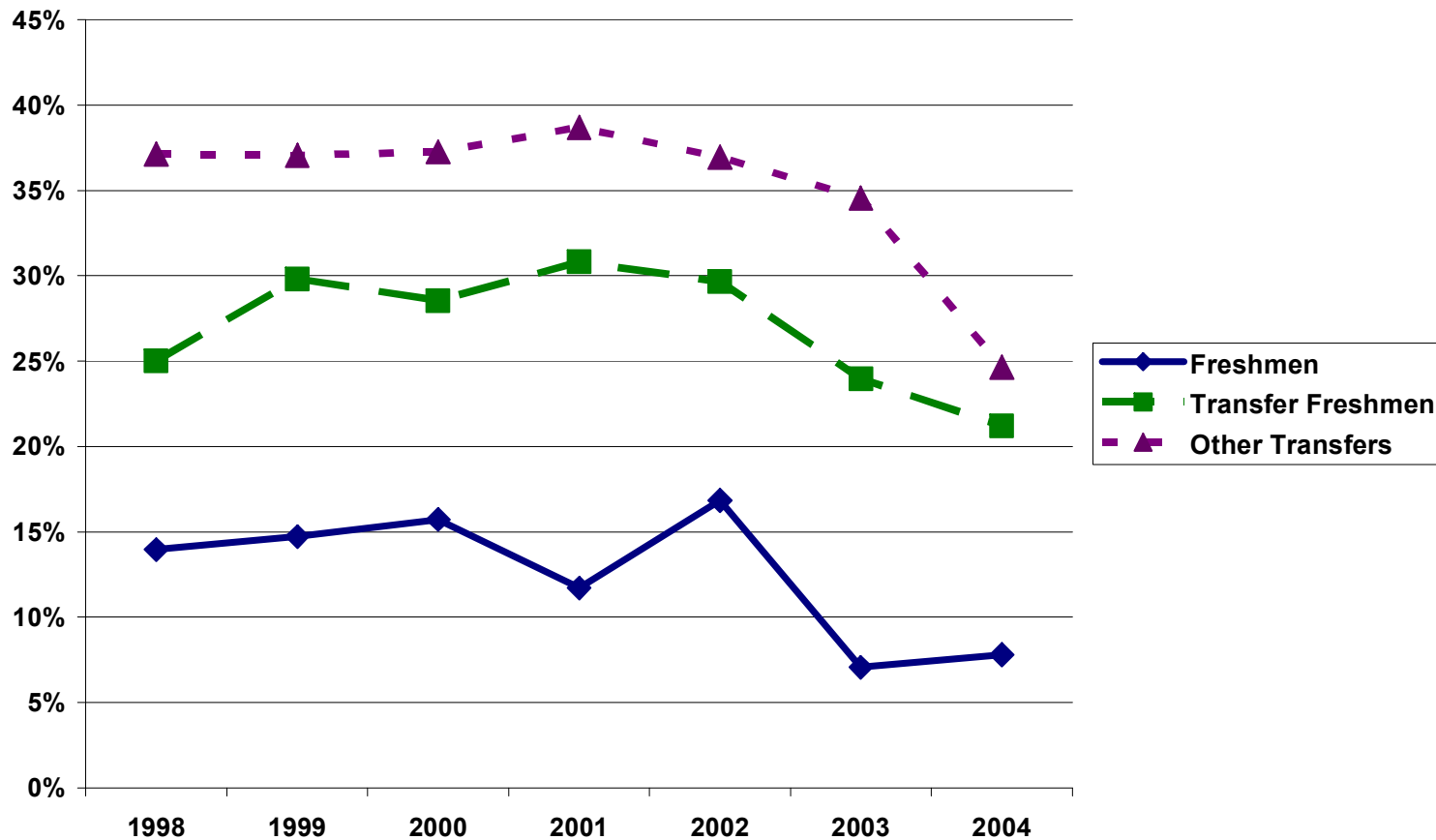
significant for each year. About 13% of all first time freshmen from 1998-2004 carried a part time load during their first semester. This part time proportion was fairly stable over most of the period, but in 2003 reached a low of 7.1% from what had been the high point of 16.8% in 2002, and it rose only to 7.8% in 2004.

The full time transfer freshman retention rate has been somewhat less stable than that of first time full time freshmen, ranging from a low of 61.3% in 1999 to a high of 70.6% in 1998 with a combined rate of 65.9% over the period. Part time transfer freshman rates have also been unstable over the same period, and they tended to be somewhat higher than those of part time first time freshmen. The low was 50.5% in 2002 with a high of 59.3% in 2004 and a combined rate of 53.9% over the entire period. The difference in retention rates between full and part time transfer freshmen was statistically significant for every year but 2004. About 31.6% of all non-CPCS transfer freshman students from 1998-2004 carried a part time load during their first semester. However, only about 22.8 % of the 2004 non-CPCS transfer freshmen attended on a part time basis. This decline in the proportion of part timers is positive given the lower retention of part time students.

The “Other Transfer” full time student retention rate has also been fairly stable since 1998, ranging from a low of 71.1% in 2001 to a high of 76.7% in 1999 with a combined rate of 73.7% over the period. Part time “Other Transfer” student rates have been less stable over the same period and at a lower level. The low was 58.7% in 1999 with a high of 65.5% in 1998 and a combined rate of 61.1% over the entire period. The difference in retention rates between full and part time “Other Transfer” students was statistically significant for each year. About 35.6% of all “Other Transfer” students from 1998-2004 carried a part time load during their first semester. This was fairly stable over the time period, but fell to 26.7% in 2004.

Part time status is a particular issue for first time freshmen. From 1998-2004 part time freshmen were retained at a rate 22.9% below that of full time students. For transfer freshmen, the difference was 11.9%, and for “Other Transfer” students it was 13.0%. Positive news is that the proportion of part timers has been trending downward for all of the groups as shown in Figure 1 which follows.

**Figure 1: Proportion of Students Attending Part Time in Their First Semester  
At UMass Boston by Cohort Fall 1998 - Fall 2004**



## Retention Rates by Race/Ethnicity and Entry Status for All UMass Boston

Retention rates by race/ethnicity within entry category are difficult to properly assess because of the relatively small numbers within each category by year. For the four largest groups of known race U.S. residents, the pattern has been fairly stable since 1995. From 1995 through 2002, Asian Pacific Islanders consistently had the highest retention rates and White non-Hispanics the lowest, with Hispanics and Black non-Hispanics in either the second or third position from 1995 through the 2001 cohorts. Asians have maintained the best rates overall, but since 2002, the other three groups been changing relative positions. In 2003, Black non-Hispanics returned to the second position at 70.9%, with White non-Hispanics at 66.7% and Hispanics at a rate of 67.0% essentially tied for third. In 2004, the pattern remained the same except that Black non-Hispanics had a retention rate of 79.2% which was statistically indistinguishable from the Asian rate. White non-Hispanics and Hispanics were exactly even at 62.8%. The following tables have the details of retention by race/ethnicity and entry status from 1998 - 2004.

### First Time Freshmen by Race/Ethnicity and Entry Status

**Table 2: Full Time Freshmen**

Full Time Freshmen	Fall 1998	Fall 1999	Fall 2000	Fall 2001	Fall 2002	Fall 2003	Fall 2004	Fall 2003 Cohort Size	Fall 2004 Cohort Size	One Year % Change in Cohort Size	One Year Change in Retention Rate
All UMB	67.4%	69.6%	69.1%	69.6%	69.7%	71.1%	<b>70.4%</b>	567	<b>521</b>	-8.1%	-0.7%
Asian P/I	79.6%	84.4%	83.2%	78.6%	80.6%	85.7%	<b>82.2%</b>	84	<b>107</b>	27.4%	-3.5%
Black NH	71.3%	72.5%	77.3%	72.4%	63.8%	70.9%	<b>79.2%</b>	79	<b>77</b>	-2.5%	8.3%
Hispanic	67.4%	69.4%	64.3%	77.8%	72.1%	66.7%	<b>62.8%</b>	60	<b>43</b>	-28.3%	-3.9%
International	53.5%	51.0%	73.3%	64.1%	68.8%	68.0%	<b>76.2%</b>	25	<b>21</b>	-16.0%	8.2%
Unk/Ref.	69.1%	66.7%	71.6%	65.7%	73.5%	75.0%	<b>66.0%</b>	56	<b>50</b>	-10.7%	-9.0%
White NH	63.7%	67.4%	61.8%	66.1%	67.0%	67.1%	<b>62.8%</b>	261	<b>218</b>	-16.5%	-4.3%

**Table 3: Part Time Freshmen**

Part Time Freshmen	Fall 1998	Fall 1999	Fall 2000	Fall 2001	Fall 2002	Fall 2003	Fall 2004	Fall 2003 Cohort Size	Fall 2004 Cohort Size	One Year % Change in Cohort Size	One Year Change in Retention Rate
All UMB	43.6%	40.5%	46.0%	56.1%	45.4%	51.2%	<b>52.3%</b>	43	<b>44</b>	2.3%	1.1%
Asian P/I	50.0%	44.4%	40.0%	85.7%	71.4%	63.6%	<b>75.0%</b>	11	<b>X</b>	NA	NA
Black NH	30.8%	50.0%	44.4%	54.6%	56.3%	33.3%	<b>25.0%</b>	6	<b>12</b>	100.0%	-8.3%
Hispanic	42.9%	35.7%	58.3%	0.0%	30.8%	80.0%	<b>NA</b>	5	<b>X</b>	NA	NA
International	50.0%	66.7%	62.5%	33.3%	42.9%	50.0%	<b>NA</b>	X	<b>X</b>	NA	NA
Unk/Ref.	41.2%	33.3%	50.0%	41.7%	38.5%	33.3%	<b>NA</b>	6	<b>X</b>	NA	NA
White NH	43.6%	37.5%	41.8%	60.0%	45.0%	46.3%	<b>60.0%</b>	13	<b>20</b>	53.8%	13.7%

**Table 4: All First Time Freshmen**

All Freshmen	Fall 1998	Fall 1999	Fall 2000	Fall 2001	Fall 2002	Fall 2003	Fall 2004	Fall 2003 Cohort Size	Fall 2004 Cohort Size	One Year % Change in Cohort Size	One Year Change in Retention Rate
All UMB	64.1%	65.4%	65.4%	68.0%	65.6%	69.7%	<b>69.0%</b>	610	<b>565</b>	-7.4%	-0.7%
Asian P/I	76.5%	81.5%	79.3%	79.5%	79.7%	83.2%	<b>82.0%</b>	95	<b>111</b>	16.8%	-1.2%
Black NH	65.6%	68.8%	70.2%	70.4%	62.2%	68.2%	<b>71.9%</b>	85	<b>89</b>	4.7%	3.7%
Hispanic	64.0%	61.9%	63.0%	72.4%	62.5%	67.7%	<b>60.9%</b>	65	<b>46</b>	-29.2%	-6.8%
International	53.1%	52.7%	71.7%	60.0%	60.9%	66.7%	<b>77.3%</b>	27	<b>22</b>	-18.5%	10.6%
Unk/Ref.	63.5%	61.8%	69.3%	62.0%	67.9%	71.0%	<b>66.7%</b>	62	<b>54</b>	-12.9%	-4.3%
White NH	61.0%	62.5%	58.4%	65.4%	63.6%	66.6%	<b>62.6%</b>	274	<b>238</b>	-13.1%	-4.0%

## Transfer Students by Class Standing at Matriculation

### Transfer Students with Freshman Standing (0-29 credits)

**Table 5: Full Time Transfer Freshmen**

Full Time Transfer Freshmen	Fall 1998	Fall 1999	Fall 2000	Fall 2001	Fall 2002	Fall 2003	Fall 2004	Fall 2003 Cohort Size	Fall 2004 Cohort Size	One Year % Change in Cohort Size	One Year Change in Retention Rate
All UMB	70.6%	61.3%	62.3%	65.8%	67.2%	68.4%	<b>67.1%</b>	367	301	-18.0%	-1.3%
Asian P/I	81.8%	60.0%	75.0%	68.4%	65.5%	82.6%	<b>80.0%</b>	46	25	-45.7%	-2.6%
Black NH	69.9%	63.3%	57.4%	62.2%	65.2%	54.2%	<b>55.8%</b>	48	52	8.3%	1.6%
Hispanic	79.2%	55.0%	50.0%	69.6%	73.7%	68.4%	<b>88.2%</b>	19	17	-10.5%	19.8%
International	63.2%	44.8%	61.9%	57.4%	81.8%	60.0%	<b>33.3%</b>	20	12	-40.0%	-26.7%
Unk/Ref.	71.9%	64.1%	60.9%	71.7%	71.7%	61.1%	<b>65.7%</b>	36	35	-2.8%	4.6%
White NH	69.3%	62.5%	63.6%	66.5%	65.5%	70.4%	<b>69.4%</b>	196	160	-18.4%	-1.0%

**Table 6: Part Time Transfer Freshmen**

Part Time Transfer Freshmen	Fall 1998	Fall 1999	Fall 2000	Fall 2001	Fall 2002	Fall 2003	Fall 2004	Fall 2003 Cohort Size	Fall 2004 Cohort Size	One Year % Change in Cohort Size	One Year Change in Retention Rate
All UMB	56.6%	53.0%	53.4%	52.9%	50.5%	56.3%	<b>59.3%</b>	135	<b>81</b>	-40.0%	3.0%
Asian P/I	66.7%	75.0%	62.5%	52.4%	36.4%	90.0%	<b>50.0%</b>	10	<b>NA</b>	NA	NA
Black NH	62.1%	41.2%	43.3%	47.8%	46.4%	56.3%	<b>27.3%</b>	32	<b>11</b>	-65.6%	-29.0%
Hispanic	80.0%	40.0%	35.3%	54.6%	35.3%	18.2%	<b>X</b>	11	<b>X</b>	NA	NA
International	16.7%	53.8%	45.5%	57.1%	55.6%	50.0%	<b>X</b>	X	<b>X</b>	NA	NA
Unk/Ref.	62.5%	43.5%	63.0%	50.0%	61.8%	57.1%	<b>64.7%</b>	14	<b>17</b>	21.4%	7.6%
White NH	54.1%	58.7%	56.5%	54.6%	53.0%	57.1%	<b>65.9%</b>	63	<b>41</b>	-34.9%	8.8%

**Table 7: All Transfer Freshmen**

All Transfer Freshmen	Fall 1998	Fall 1999	Fall 2000	Fall 2001	Fall 2002	Fall 2003	Fall 2004	Fall 2003 Cohort Size	Fall 2004 Cohort Size	One Year % Change in Cohort Size	One Year Change in Retention Rate
All UMB	67.2%	58.7%	59.9%	61.3%	61.7%	65.1%	<b>65.5%</b>	502	<b>382</b>	-23.9%	0.3%
Asian P/I	77.4%	62.8%	70.8%	62.7%	57.5%	83.9%	<b>74.2%</b>	56	<b>31</b>	-44.6%	-9.7%
Black NH	67.7%	58.3%	53.3%	54.2%	58.1%	55.0%	<b>50.8%</b>	80	<b>63</b>	-21.3%	-4.2%
Hispanic	79.3%	50.0%	42.9%	64.7%	55.6%	50.0%	<b>80.0%</b>	30	<b>20</b>	-33.3%	30.0%
International	57.8%	47.6%	59.3%	57.3%	70.0%	58.3%	<b>42.9%</b>	24	<b>14</b>	-41.7%	-15.4%
Unk/Ref.	69.3%	58.6%	61.5%	63.9%	67.8%	60.0%	<b>65.4%</b>	50	<b>52</b>	4.0%	5.4%
White NH	65.6%	61.4%	61.8%	62.6%	61.7%	67.2%	<b>68.7%</b>	259	<b>201</b>	-22.4%	1.5%

**Transfer Students with 30 or More Transfer Credits (Other Transfer)****Table 8: Full Time Other Transfer**

Full Time Other Transfer	Fall 1998	Fall 1999	Fall 2000	Fall 2001	Fall 2002	Fall 2003	Fall 2004	Fall 2003 Cohort Size	Fall 2004 Cohort Size	One Year % Change in Cohort Size	One Year Change in Retention Rate
All UMB	74.2%	76.7%	74.7%	71.1%	74.2%	71.3%	<b>74.8%</b>	495	<b>603</b>	21.8%	3.5%
Asian P/I	75.0%	79.5%	80.0%	71.4%	70.0%	81.0%	<b>78.2%</b>	42	<b>55</b>	31.0%	-2.8%
Black NH	82.9%	72.0%	62.1%	73.0%	62.5%	63.4%	<b>68.8%</b>	71	<b>77</b>	8.5%	5.4%
Hispanic	75.0%	80.0%	80.6%	75.0%	54.6%	61.1%	<b>66.7%</b>	18	<b>27</b>	50.0%	5.6%
International	62.5%	77.2%	76.8%	59.5%	71.9%	73.7%	<b>79.5%</b>	19	<b>39</b>	105.3%	5.8%
Unk/Ref.	71.1%	87.0%	75.4%	75.3%	79.8%	78.0%	<b>74.3%</b>	59	<b>74</b>	25.4%	-3.7%
White NH	74.9%	74.5%	75.3%	70.9%	77.0%	70.9%	<b>75.9%</b>	285	<b>328</b>	15.1%	5.0%

**Table 9: Part Time Other Transfer**

Part Time Other Transfer	Fall 1998	Fall 1999	Fall 2000	Fall 2001	Fall 2002	Fall 2003	Fall 2004	Fall 2003 Cohort Size	Fall 2004 Cohort Size	One Year % Change in Cohort Size	One Year Change in Retention Rate
All UMB	65.5%	58.7%	61.7%	59.0%	59.5%	57.6%	<b>62.0%</b>	262	<b>208</b>	-20.6%	4.4%
Asian P/I	45.5%	55.2%	62.1%	63.2%	64.3%	47.4%	<b>55.0%</b>	19	<b>20</b>	5.3%	7.6%
Black NH	70.2%	53.6%	63.5%	65.1%	58.8%	47.8%	<b>62.2%</b>	46	<b>45</b>	-2.2%	14.4%
Hispanic	68.8%	57.1%	50.0%	73.3%	52.6%	40.0%	<b>72.2%</b>	15	<b>18</b>	20.0%	32.2%
International	50.0%	66.7%	64.3%	66.7%	66.7%	72.7%	<b>60.0%</b>	11	<b>X</b>	NA	NA
Unk/Ref.	72.2%	66.7%	64.1%	50.0%	62.5%	66.7%	<b>66.7%</b>	27	<b>24</b>	-11.1%	0.0%
White NH	66.1%	58.3%	61.3%	57.6%	58.1%	61.5%	<b>60.4%</b>	143	<b>96</b>	-32.9%	-1.1%

**Table 10: All Other Transfer**

All Other Transfer	Fall 1998	Fall 1999	Fall 2000	Fall 2001	Fall 2002	Fall 2003	Fall 2004	Fall 2003 Cohort Size	Fall 2004 Cohort Size	One Year % Change in Cohort Size	One Year Change in Retention Rate
All UMB	71.1%	70.1%	70.0%	66.5%	68.7%	66.6%	<b>71.5%</b>	757	<b>811</b>	7.1%	4.9%
Asian P/I	65.2%	69.9%	72.5%	68.1%	67.7%	70.5%	<b>72.0%</b>	61	<b>75</b>	23.0%	1.5%
Black NH	75.9%	62.6%	63.1%	69.1%	60.4%	57.3%	<b>66.4%</b>	117	<b>122</b>	4.3%	9.1%
Hispanic	72.2%	62.1%	70.8%	74.3%	53.7%	51.5%	<b>68.9%</b>	33	<b>45</b>	36.4%	17.4%
International	61.1%	75.0%	74.3%	61.5%	70.5%	72.3%	<b>77.3%</b>	30	<b>44</b>	46.7%	5.0%
Unk/Ref.	72.0%	80.2%	71.2%	66.1%	74.8%	74.4%	<b>72.5%</b>	86	<b>98</b>	14.0%	-2.0%
White NH	71.9%	68.6%	70.4%	66.1%	70.5%	67.8%	<b>72.4%</b>	428	<b>424</b>	-0.9%	4.6%

**Table 11: All Transfer Students**

All Transfer Students	Fall 1998	Fall 1999	Fall 2000	Fall 2001	Fall 2002	Fall 2003	Fall 2004	Fall 2003 Cohort Size	Fall 2004 Cohort Size	One Year % Change in Cohort Size	One Year Change in Retention Rate
All UMB	69.3%	65.3%	65.6%	64.1%	65.6%	65.9%	<b>69.6%</b>	1339	<b>1193</b>	-10.9%	3.7%
Asian P/I	71.1%	67.2%	71.8%	64.5%	64.4%	77.7%	<b>72.6%</b>	121	<b>106</b>	-12.4%	-5.1%
Black NH	71.4%	59.2%	58.9%	62.9%	59.7%	55.8%	<b>61.1%</b>	215	<b>185</b>	-14.0%	5.3%
Hispanic	75.4%	62.3%	59.0%	69.6%	56.1%	54.9%	<b>72.3%</b>	71	<b>65</b>	-8.5%	17.4%
International	59.6%	64.9%	67.7%	59.1%	70.3%	66.7%	<b>69.0%</b>	54	<b>58</b>	7.4%	2.3%
Unk/Ref.	70.6%	70.9%	66.7%	64.9%	71.4%	66.2%	<b>70.0%</b>	151	<b>150</b>	-0.7%	3.8%
White NH	69.2%	65.6%	66.7%	64.6%	66.5%	67.7%	<b>71.2%</b>	722	<b>625</b>	-13.4%	3.5%

### Retention Rates by Entry Status and College within UMass Boston

#### Notes on College Reporting

- The college is the college to which the student was admitted.
- The student is counted as retained if s/he was enrolled in any college at UMass Boston in the first fall semester after the year of first enrollment or had already graduated.
- All CPCS students are counted as enrolling full time and are reported only for the “First Time Freshmen” and “All Transfer Students” categories.
- Retention rates are not reported by race/ethnicity within college because of small cell sizes.
- The College of Arts and Sciences (CAS) split into the College of Liberal Arts (CLA) and the College of Science and Mathematics (CSM) in 2003.
- CLA admits the majority of students in each entry group.
- Small cell sizes contribute to the volatility of other college rates.

## First Time Freshmen

**Table 12: First Time Full Time Freshmen**

Full Time Freshmen	Fall 1998	Fall 1999	Fall 2000	Fall 2001	Fall 2002	Fall 2003	Fall 2004	Fall 2003 Cohort Size	Fall 2004 Cohort Size	One Year % Change in Cohort Size	One Year Change in Retention Rate
CAS	67.8%	69.5%	67.8%	69.9%	70.3%	NA	NA	NA	NA	NA	NA
CLA						70.1%	71.4%	385	370	-3.9%	1.3%
CSM						70.9%	61.0%	86	82	-4.7%	-9.9%
CPCS	53.9%	68.8%	60.0%	55.6%	52.6%	61.9%	66.7%	21	X	NA	NA
E&HS	66.7%	50.0%	50.0%	100.0%	100.0%	60.0%	60.0%	5	5	0.0%	0.0%
CM	66.7%	74.0%	84.6%	76.5%	71.4%	79.1%	71.8%	43	39	-9.3%	-7.3%
NUR	77.3%	62.5%	93.3%	66.7%	50.0%	81.5%	90.9%	27	22	-18.5%	9.4%

**Table 13: First Time Part Time Freshmen**

Part Time Freshmen	Fall 1998	Fall 1999	Fall 2000	Fall 2001	Fall 2002	Fall 2003	Fall 2004	Fall 2003 Cohort Size	Fall 2004 Cohort Size	One Year % Change in Cohort Size	One Year Change in Retention Rate
CAS	43.7%	37.7%	44.8%	57.3%	46.1%	NA	NA	NA	NA	NA	NA
CLA						54.6%	51.6%	33	31	-6.1%	-3.0%
CSM						40.0%	44.4%	5	9	80.0%	4.4%
E&HS	NA	100.0%	NA	NA	0.0%	NA	0.0%	X	X	NA	NA
CM	42.9%	75.0%	66.7%	40.0%	42.9%	33.3%	100.0%	X	X	NA	NA
NUR	NA	0.0%	NA	50.0%	45.4%	50.0%	100.0%	X	X	NA	NA

**Table 14: All First Time Freshmen**

All Freshmen	Fall 1998	Fall 1999	Fall 2000	Fall 2001	Fall 2002	Fall 2003	Fall 2004	Fall 2003 Cohort Size	Fall 2004 Cohort Size	One Year % Change in Cohort Size	One Year Change in Retention Rate
CAS	64.0%	64.7%	63.9%	68.4%	66.0%	NA	NA	NA	NA	NA	NA
CLA						68.9%	69.8%	418	401	-4.1%	0.9%
CSM						69.2%	59.3%	91	91	0.0%	-9.9%
CPCS	53.9%	68.8%	60.0%	55.6%	52.6%	61.9%	66.7%	21	3	-85.7%	4.8%
E&HS	66.7%	60.0%	50.0%	100.0%	85.7%	60.0%	50.0%	5	6	20.0%	-10.0%
CM	64.1%	74.1%	82.2%	71.8%	66.7%	76.1%	72.5%	46	40	-13.0%	-3.6%
NUR	77.3%	55.6%	93.3%	63.6%	50.0%	79.3%	91.7%	29	24	-17.2%	12.4%

**Transfer Students by Class Standing at Matriculation****Transfer Students with Freshman Standing (0-29 credits)****Table 15: Full Time Transfer Freshmen**

Full Time Transfer Freshmen	Fall 1998	Fall 1999	Fall 2000	Fall 2001	Fall 2002	Fall 2003	Fall 2004	Fall 2003 Cohort Size	Fall 2004 Cohort Size	One Year % Change in Cohort Size	One Year Change in Retention Rate
CAS	69.0%	59.3%	62.9%	62.8%	68.4%	NA	NA	NA	NA	NA	NA
CLA						66.5%	70.5%	233	166	-28.8%	4.0%
CSM						66.7%	63.8%	66	58	-12.1%	-2.9%
CPCS							51.9%	NA	27	NA	NA
E&HS	50.0%	28.6%	86.7%	100.0%	28.6%	77.8%	71.4%	9	7	-22.2%	-6.4%
CM	70.7%	65.6%	68.6%	80.4%	61.5%	74.3%	66.7%	35	27	-22.9%	-7.6%
NUR	100.0%	92.3%	54.6%	62.5%	70.8%	79.2%	68.8%	24	16	-33.3%	-10.5%

**Table 16: Part Time Transfer Freshmen**

Part Time Transfer Freshmen	Fall 1998	Fall 1999	Fall 2000	Fall 2001	Fall 2002	Fall 2003	Fall 2004	Fall 2003 Cohort Size	Fall 2004 Cohort Size	One Year % Change in Cohort Size	One Year Change in Retention Rate
CAS	58.5%	51.7%	50.0%	50.6%	51.0%	NA	NA	NA	NA	NA	NA
CLA						46.1%	66.0%	76	50	-34.2%	19.9%
CSM						60.0%	53.3%	20	15	-25.0%	-6.7%
E&HS	66.7%	66.7%	100.0%	50.0%	25.0%	100.0%	100.0%	X	X	NA	NA
CM	44.0%	55.0%	73.3%	69.2%	66.7%	63.2%	35.7%	19	14	-26.3%	-27.5%
NUR	58.3%	57.1%	61.9%	55.3%	40.0%	83.3%	100.0%	18	X	NA	NA

**Table 17: All Transfer Freshmen**

All Transfer Freshmen	Fall 1998	Fall 1999	Fall 2000	Fall 2001	Fall 2002	Fall 2003	Fall 2004	Fall 2003 Cohort Size	Fall 2004 Cohort Size	One Year % Change in Cohort Size	One Year Change in Retention Rate
CAS	66.2%	56.9%	59.1%	58.6%	62.4%	NA	NA	NA	NA	NA	NA
CLA						61.5%	69.4%	309	216	-30.1%	7.9%
CSM						65.1%	61.6%	86	73	-15.1%	-3.5%
E&HS	53.9%	40.0%	87.5%	80.0%	27.3%	81.8%	75.0%	11	8	-27.3%	-6.8%
CM	60.6%	61.5%	70.0%	78.1%	63.4%	70.4%	56.1%	54	41	-24.1%	-14.3%
NUR	68.8%	66.7%	59.4%	59.0%	56.8%	81.0%	70.6%	42	17	-59.5%	-10.4%

## Transfer Students with 30 or More Transfer Credits (Other Transfer)

**Table 18: Full Time Other Transfer**

Full Time Other Transfer	Fall 1998	Fall 1999	Fall 2000	Fall 2001	Fall 2002	Fall 2003	Fall 2004	Fall 2003 Cohort Size	Fall 2004 Cohort Size	One Year % Change in Cohort Size	One Year Change in Retention Rate
CAS	72.1%	74.1%	72.5%	67.4%	71.4%	NA	NA	NA	NA	NA	NA
CLA						70.0%	74.4%	257	293	14.0%	4.4%
CSM						63.8%	64.4%	69	104	50.7%	0.6%
E&HS	84.6%	100.0%	46.2%	NA	100.0%	63.6%	76.5%	11	17	54.5%	12.9%
CM	79.4%	87.1%	90.1%	77.5%	80.7%	80.0%	83.0%	100	112	12.0%	3.0%
NUR	78.4%	78.8%	73.1%	66.7%	80.7%	72.4%	90.9%	58	44	-24.1%	18.5%

**Table 19: Part Time Other Transfer**

Part Time Other Transfer	Fall 1998	Fall 1999	Fall 2000	Fall 2001	Fall 2002	Fall 2003	Fall 2004	Fall 2003 Cohort Size	Fall 2004 Cohort Size	One Year % Change in Cohort Size	One Year Change in Retention Rate
CAS	62.0%	57.3%	60.1%	57.5%	55.2%	NA	NA	NA	NA	NA	NA
CLA						49.6%	61.9%	113	97	-14.2%	12.3%
CSM						51.4%	57.9%	37	57	54.1%	6.5%
E&HS	80.0%	40.0%	100.0%	100.0%	62.5%	50.0%	50.0%	X	X	X	X
CM	63.3%	49.1%	66.1%	76.2%	63.0%	68.0%	71.1%	50	38	-24.0%	3.1%
NUR	75.3%	72.1%	59.2%	47.8%	69.8%	69.0%	57.1%	58	14	-75.9%	-11.9%

**Table 20: All Other Transfer**

All Other Transfer	Fall 1998	Fall 1999	Fall 2000	Fall 2001	Fall 2002	Fall 2003	Fall 2004	Fall 2003 Cohort Size	Fall 2004 Cohort Size	One Year % Change in Cohort Size	One Year Change in Retention Rate
CAS	68.7%	68.7%	68.5%	64.0%	64.8%	NA	NA	NA	NA	NA	NA
CLA						63.8%	71.3%	370	390	5.4%	7.5%
CSM						59.4%	62.1%	106	161	51.9%	2.7%
E&HS	83.3%	80.0%	61.1%	100.0%	82.4%	60.0%	73.7%	15	19	26.7%	13.7%
CM	75.8%	72.1%	80.0%	77.0%	74.4%	76.0%	80.0%	150	150	0.0%	4.0%
NUR	76.4%	74.3%	64.0%	54.8%	73.8%	70.7%	82.8%	116	58	-50.0%	12.1%

**All Transfer Students****Table 21: All Transfer Students**

All Transfer Students	Fall 1998	Fall 1999	Fall 2000	Fall 2001	Fall 2002	Fall 2003	Fall 2004	Fall 2003 Cohort Size	Fall 2004 Cohort Size	One Year % Change in Cohort Size	One Year Change in Retention Rate
CAS	67.6%	63.8%	64.4%	62.8%	64.5%	NA	NA	NA	NA	NA	NA
CLA						62.7%	70.6%	681	606	-11.0%	7.9%
CSM						62.0%	62.0%	192	234	21.9%	0.0%
CPCS	74.6%	65.3%	55.8%	62.8%	64.4%	65.3%	56.7%	75	60	-20.0%	-8.6%
E&HS	71.0%	64.0%	73.5%	87.5%	60.7%	69.2%	74.1%	26	27	3.8%	4.9%
CM	70.6%	69.3%	77.4%	78.0%	71.8%	74.5%	74.9%	204	191	-6.4%	0.4%
NUR	74.7%	72.0%	62.6%	57.0%	68.0%	73.1%	80.0%	160	75	-53.1%	6.9%