

## **WIRELESS NETWORKING AT UMASS BOSTON**

Wireless networking is now available in the Atrium Café at the Campus Center.

To connect to the wireless network, you will need:

- ✓ A valid UMass e-mail account and password on the MS Exchange email system. If you do not have a UMass e-mail account, you can call 7-5220 for faculty and staff or 7-4000 for students.
- ✓ A computer with a wireless network card. This wireless network card must be 802.11b WiFi compliant.

To determine if your computer already has wireless built in, right click on “My Network Places” and choose Properties. If wireless is built in, you will see an icon for wireless networking already there.

There are currently three standards for wireless networking, 802.11a, 802.11b, and 802.11g. The UMass wireless network supports the 802.11b standard. To determine if your built-in card is A, B, or G compatible, you must consult the documentation that came with your computer.

If your laptop does not have built-in wireless, you can buy a PCMCIA wireless network card, which will fit in the slot on the side of your computer. Just make sure the card you buy is 802.11b WiFi compliant. If you need assistance please contact the Computing Services Helpdesk at 617-287-5220 or [helpdesk@umb.edu](mailto:helpdesk@umb.edu).

Please read the following instructions on using wireless networking on campus. The instructions will show you how to start using the wireless network, with different configurations. Identify your system with the one in the example and follow the steps given.

Instructions on using the wireless network on campus:

➤ **For Windows XP**

As soon as you enter the Atrium Café (Campus Center), you should see a message on the right hand side of the taskbar, either showing that wireless networks are available or your computer is already connected to a wireless network.

If you do not see a Wireless Network icon on the taskbar, then right-click on 'My Network Places'; go to Properties and make sure that the Wireless Connection is not disabled.

- If you have never connected to the Campus Center wireless network before:
- ❑ Double-click on the Wireless Network icon; you should now see the Wireless Communication Network Status box.
  - ❑ In the available networks list, you should see 'Campus Center'.

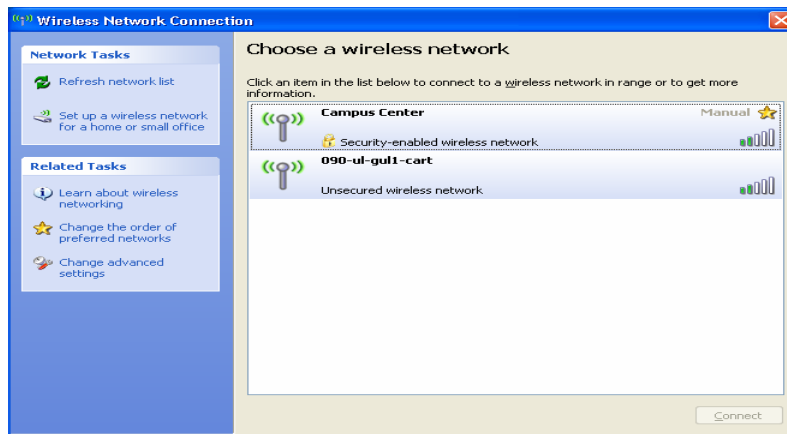


Figure 1

- ❑ Click on 'Campus Center' in the list and hit 'Connect'. This will open another box, which will ask you to enter the WEP (Wireless Encryption Protocol) key, which is **'umass'** (lower case – without the quotes). Enter the WEP key in the Network Key box and again in the Confirmation Key box.
- ❑ Hit 'OK' button once you enter the WEP key.
- ❑ Your computer should be connected to the Campus Center wireless network. It might take few minutes to get connected.
- ❑ Launch Internet Explorer.
- ❑ You will see the message 'Connecting to site 158.121.252.36' on the status bar.

- A security alert will pop up on the screen, saying ‘Do you want to proceed?’ Under “Proceed” hit “Yes”. See Fig. 2.



Figure 2

- You should see the “Wireless Campus Network” splash screen. The upper left corner of the screen has a log on box and a link, ‘Install CA Certificate’ just below the box.

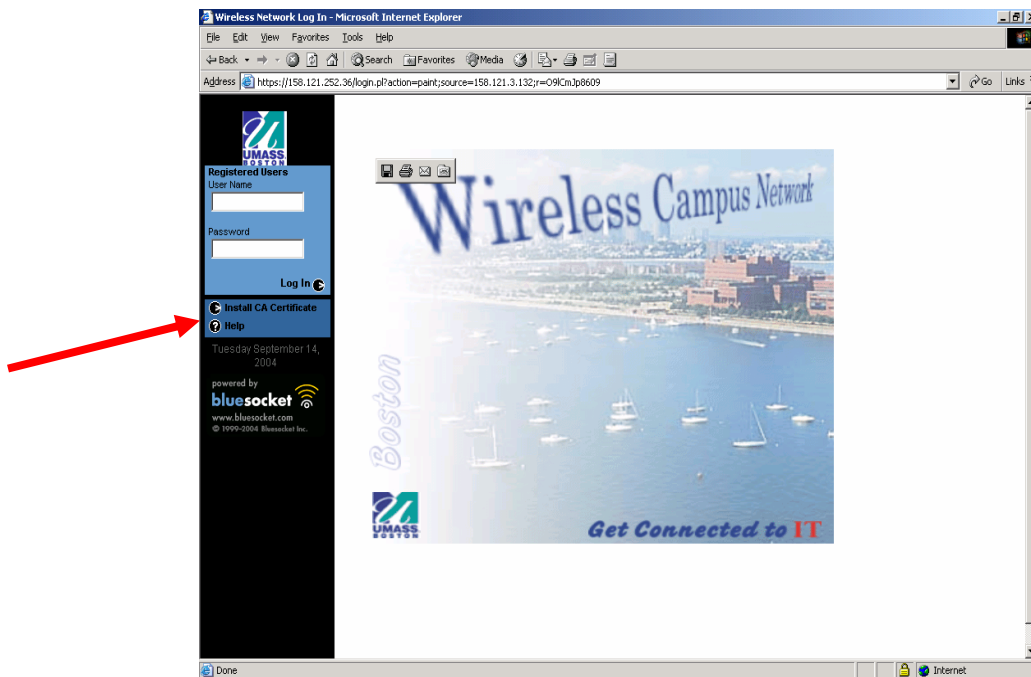
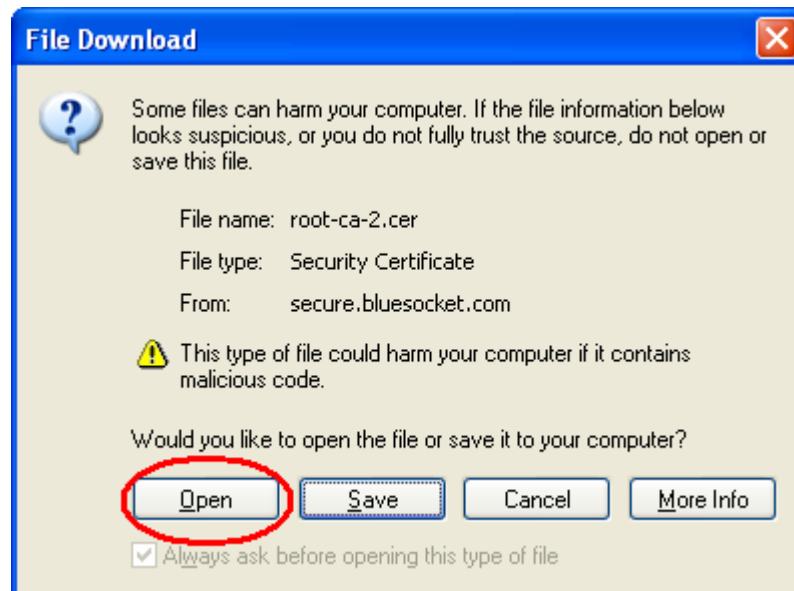


Figure 3

- Click on 'Install CA Certificate'; you should see a file download window.



**Figure 4**

- On the file download screen click 'Open'.
- Please see the next page.

- A new window will open with 'Certificate Information' for BlueSocket.

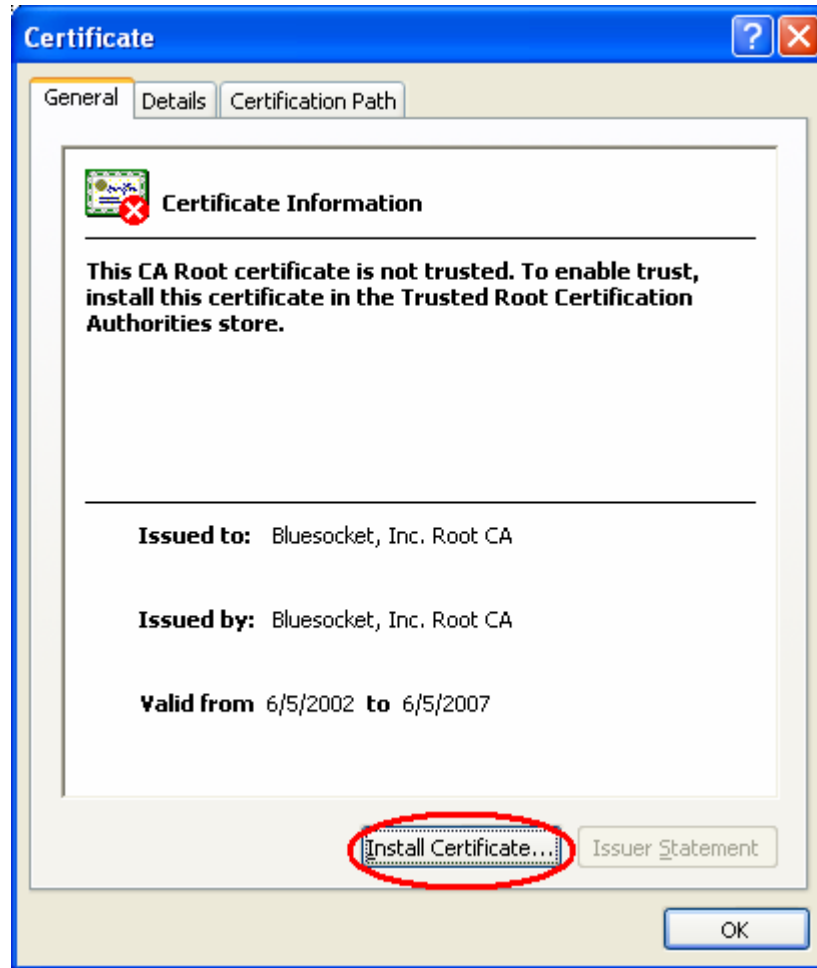


Figure 5

- Click on 'Install Certificate' button on the Certificate Box; it opens the Certificate Import Wizard; click next.
- Click next on the import wizard.

- ❑ Click Yes on the 'Root Certificate Store' box and OK on the 'Import Wizard'.

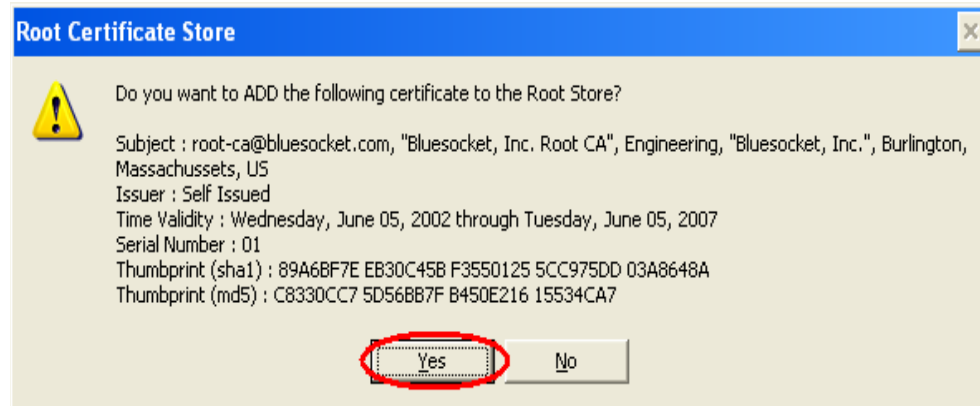


Figure 6

- ❑ Finally click OK to complete the procedure.
- ❑ Once you installed the certificate close the Internet Explorer and open it again. Now you will **NOT see the Security Alert Message**.
- ❑ After installing the certificate you should be back at the welcome screen saying 'Wireless Campus Network'.
- ❑ You need to log on with your e-mail id before you start browsing.
- ❑ The 'Log on' box is on the upper left corner, which is a blue box that says Registered Users (See Fig 3).
- ❑ Enter your UMass e-mail and password.
- ❑ After entering the password, hit log on. You can now browse the Web. (Note: If you have Windows XP SP2, see below.)
- ❑ After you finish browsing you need to log out.
- ❑ To log out, close Internet Explorer and look for the bluesocket pop-up.
- ❑ The pop-up should say 'bluesocket' and should show a message, 'Click to log out'.



Figure 7

- ❑ Click on the message if you want to log out.
- ❑ Once you are logged out, the pop-up should disappear.

If you have already used the Wireless Network in the Campus Center you will not have to re-enter the WEP key. You should be able to launch Internet Explorer right away. From there you will need to log on with your UMass e-mail account, as described above.

➤ **For Windows XP SP2**

If you have Windows XP Service Pack 2, the instructions are the same except that SP2 has a built-in pop-up blocker, which you must configure to allow the bluesocket pop-up.

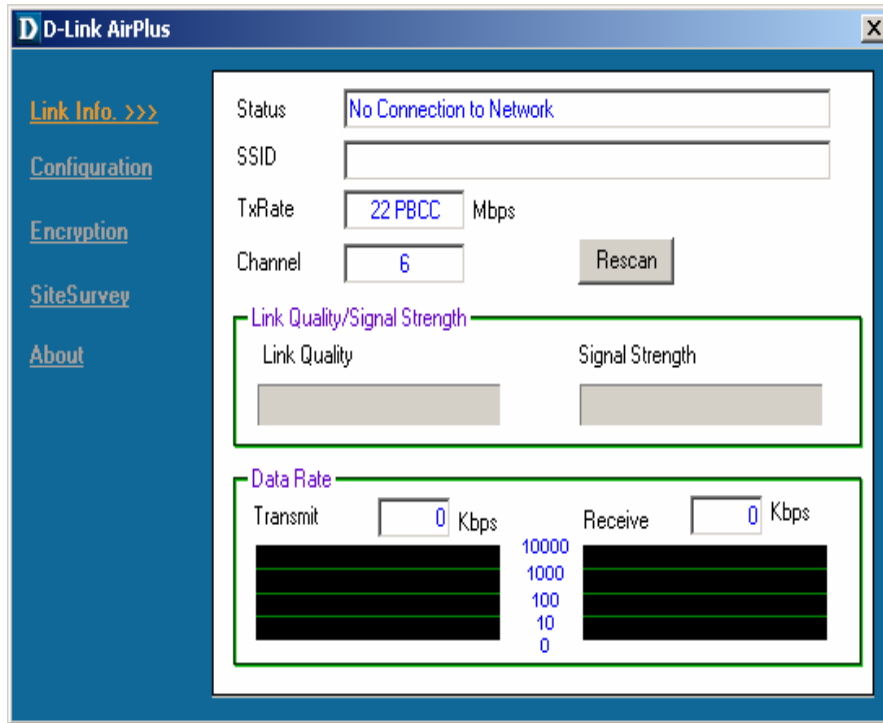
Once you are connected to network, log on by using your email id and password. After entering the password, you should see Pop-Up blocked bar under the address bar.

Right click on the pop-up blocker bar and click on the option, “Allow pop-ups from this site.” Finally click yes on the confirmation box.

➤ **For Windows 2000**

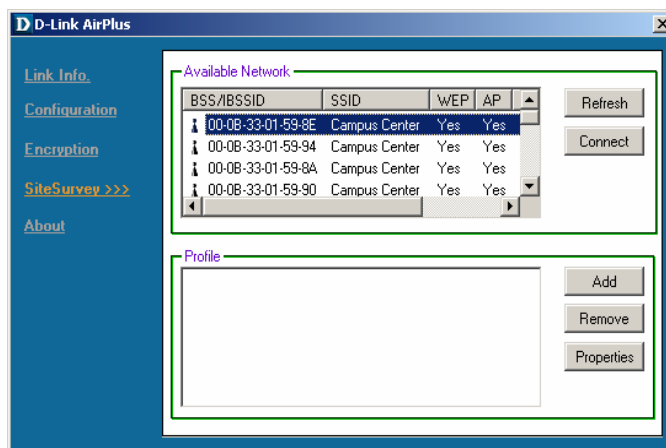
- ❑ You must first install the configuration utility software that came with your wireless network card. This should be on a CD included with the card. If you don't have the CD, you should be able to download the utility from the website of the card's manufacturer.
- ❑ After installing the software, insert the wireless network card in the PCMCIA slot.
- ❑ Run the utility software for the wireless card and install the drivers for the wireless card.
- ❑ After the card is installed, run the configuration utility.
- ❑ Some utility software may open a window for entering the WEP key; some may not open such window, but instead put an icon on the taskbar.
- ❑ If the utility software puts an icon on the taskbar without opening a separate window, then double-click on that icon.
- ❑ The utility that came with your wireless card should provide a window for entering the WEP key and for connecting to a wireless network. However the screen may look different for different wireless cards.

- The screen shots below are from the configuration utility provided with the D-Link wireless card. D-Link is one of several popular brand names. Your configuration may appear differently.



**Figure 8**

- Select “site survey” or “scan” or similar option.



**Figure 9**

- Look for a network with the name (or SSID) ‘Campus Center’.

- ❑ Select 'Campus Center' from the list of available networks and hit 'Connect'.
- ❑ Enter the 'umass' as WEP key (lower case – without the quotes)..
- ❑ If you see a drop-down list box for Key Format and see a choice between ASCII and HEX, then select ASCII.
- ❑ If your utility requires that the WEP key be entered in HEX, then enter the following values: 75 6D 61 73 73 (This is just the hexadecimal version of 'umass'.)
- ❑ If you see a drop-down list box for Key Length and see various choices, then select 64 bits or 40 bits. Do not select 128 bits or 256 bits.

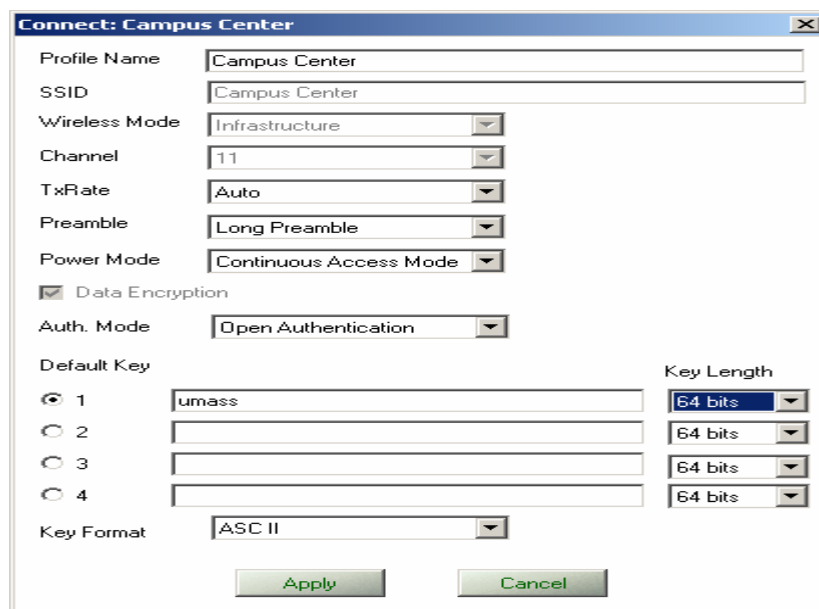


Figure 10

- ❑ Click 'Apply' and your machine should be connected to the Campus Center wireless network.
- ❑ Please see the next page.

- After connecting to the Campus Center network you should see a screen showing signal strength and link quality.

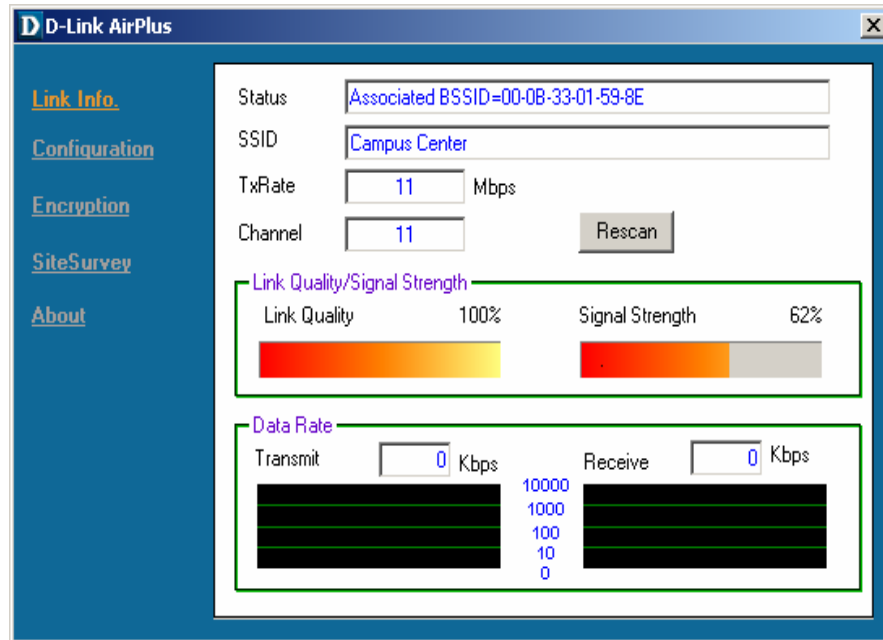


Figure 11

- Once connected, continue with the directions for installing the certificate on the bottom of page 3.