



**Tracking Undergraduate Student Success for International Students at
UMass Boston, Fall 2017**

Douglas Ducharme EdD, Associate Director

The Office of Institutional Research, Assessment, and Planning (OIRAP) has been working with Kristof Zaba, the Executive Director of the International Student Success Program (ISSP) at UMass Boston, to provide tracking of student success for undergraduate ISSP students, formerly identified as Navitas students. The tracking can be complicated because ISSP students are admitted in both spring and fall and because, although the majority of the students are classified as freshmen, some ISSP students are transfers by UMass Boston standards. They also may be classified as either full-time or part-time. The ISSP has requested tracking on a semester by semester basis, thereby tracking multiple cohorts through multiple semesters. This report provides a comparison of the progress of ISSP students, non-ISSP International students, and US domestic first-time full-time (FTFT) freshmen entering with the cohort.

The ISSP students listed include transfers, full-time, and part-time freshmen. Therefore, the retention rates will not match those reported for the official cohort. Appendix A provides key metrics for each cohort, including first-year retention rate, credits earned, and grade point average, as well as graduation rates and final grade point average (Tables A-1).

Overall, ISSP students perform at a comparable level to other international students as well as domestic students for many of the key metrics for student success.

Fall 2011 Cohort

The Fall 2011 cohort of students represent the first cohort of ISSP students to graduate within 6 years. Table 1 depicts the progress of ISSP students compared to other student types from the Fall 2011 cohort. While there was little difference across student types based on first-year retention rate, the graduation rates for ISSP students exceeded those for other student types.

Table 1

Retention and Completion for Fall 2011 Cohort by Student Types

	ISSP	Non- ISSP Int'l	Domestic
Cohort Size (N)	43	135	1122
Continued F12	34	111	876
% Continued F12	79.1%	82.2%	78.1%
Continued F13	30	87	704
% Continued F13	69.8%	64.4%	62.8%
4-Yr Graduates	14	37	168
4-Yr Grad Rate	32.6%	27.4%	15.0%
5-Yr Graduates	22	67	417
5-Yr Grad Rate	51.1%	49.6%	37.2%
6-Yr Graduates	24	71	525
6-Yr Grad Rate	55.8%	52.6%	46.8%

4-Year Graduation Rates

Figure 1 illustrates the 4-year graduation rates for the 2011-2013 Fall cohorts. ISSP students have graduated within 4 years at the same rate or better than other student types over the past three years.

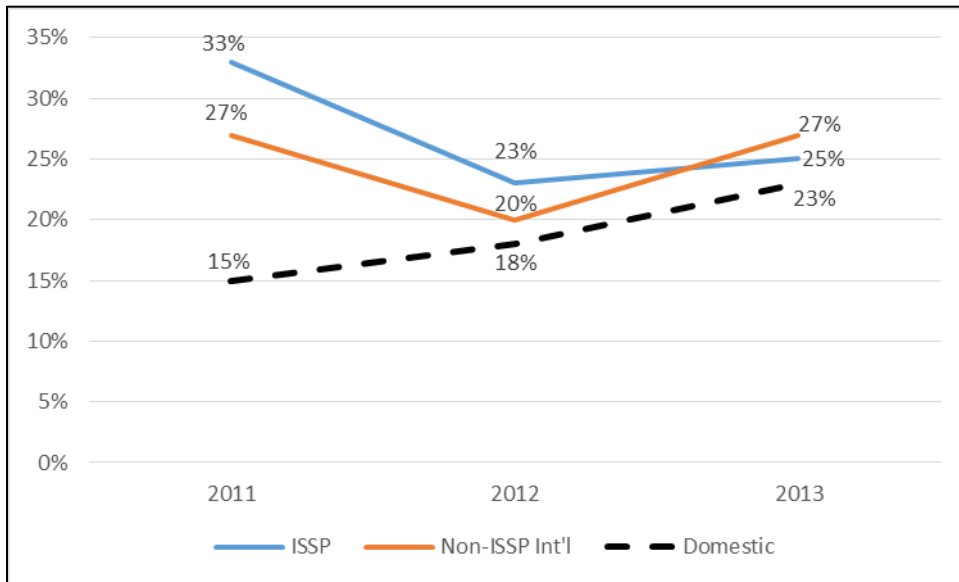


Figure 1. 4-year graduation rates for Fall 2011-13 cohorts by student types.

Final Grade Point Average

Figure 2 illustrates the final grade point averages for graduates from the 2011-2013 Fall cohorts. ISSP students graduated with lower final GPAs than domestic students. ISSP students graduated with higher GPAs than other international students at the 4-year and 5-year completion marks, but have lower GPAs at the 6-year completion point.

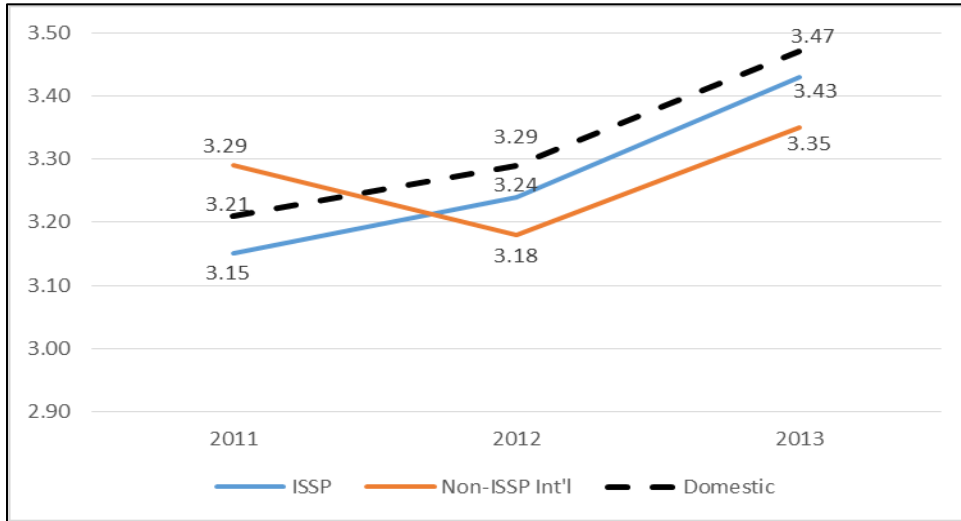


Figure 2. Final grade point averages for graduates from Fall 2011-13 cohorts by student types

Credit Load

During the Fall 2017 semester, all ISSP students ($N = 513$, $M = 13.6$) maintained a lower credit load when compared with other international ($N = 634$, $M = 14.0$) or domestic ($N = 4875$, $M = 14.0$) students. However, the ISSP students included part-time students in their first-year while international and domestic student cohorts excluded part-time students. Table 2 depicts the average credit hours taken and percentage of full-time students for student types beyond their first year. While ISSP students take less than a full load during their first year, they take a comparable or greater credit hour load in subsequent years enrolled.

Table 2

Credit Hour Load by Student Types, Fall 2017 Beyond First-Year Students

Student Type	N	Mean Credit Hours	Full-time (%)
ISSP	412	13.9	94
Non-ISSP Int'l	519	13.8	92
Domestic	3,259	13.4	88

First-Year Student Success

Figure 3 illustrates the one-year retention rates by student types from the 2011-2016 Fall cohorts. ISSP students maintained a comparable or higher retention rate relative to other international students and domestic students.

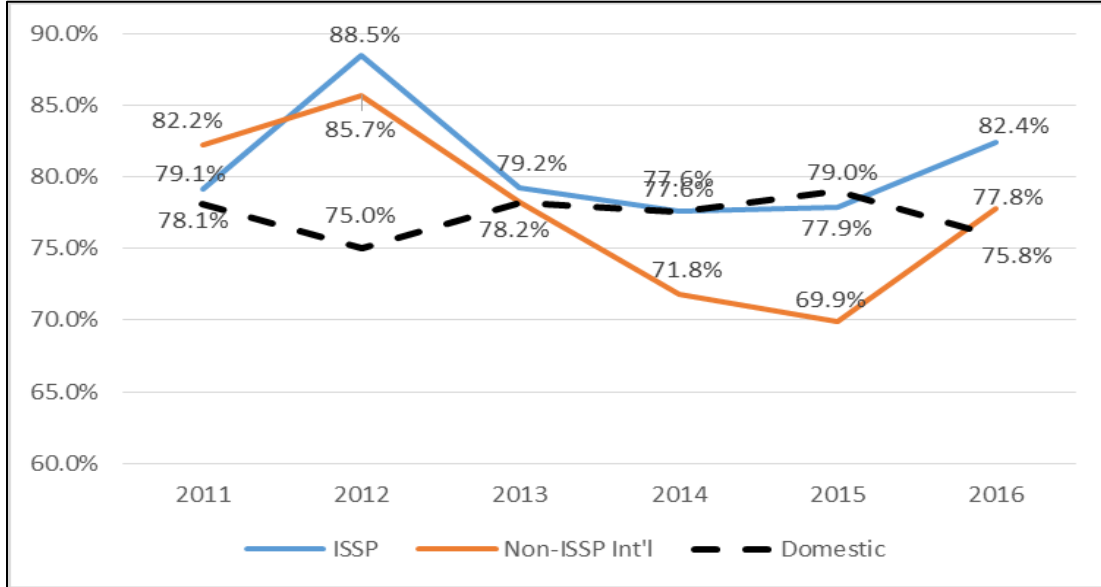


Figure 3. One-year retention rates from Fall 2011-16 cohorts by student types

Figure 4 illustrates the first-year cumulative grade point averages by student types from the 2011-2016 Fall cohorts. ISSP students maintained a comparable or higher retention rate relative to other international students and domestic students.

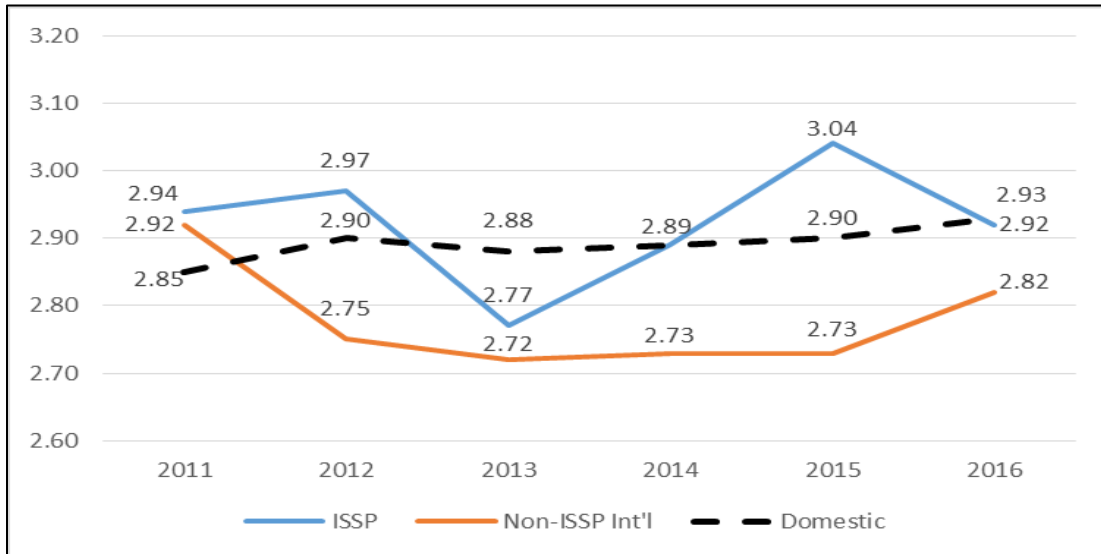


Figure 4. First-year grade point averages from Fall 2011-16 cohorts by student types

Figure 5 illustrates the first-year credit hours earned by student types from the 2011-2016 Fall cohorts. ISSP students maintained a comparable or higher retention rate relative to other international students and domestic students.

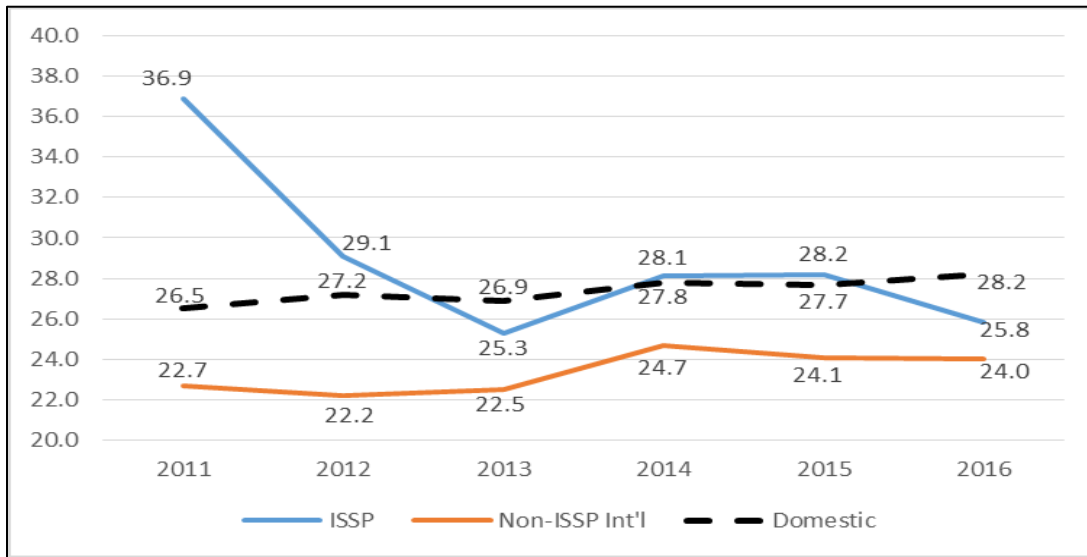


Figure 5. First-year average credit hours earned from Fall 2011-16 cohorts by student types

Gender

While 56 percent of the UMB undergraduate domestic students are made up of female students, international students consist primarily of male students, with 66% of ISSP students and 61% of non-ISSP international students identified as male during the Fall 2017 semester.

National Origin

The 513 ISSP students hailed from 43 different countries. The 634 non-ISSP international students hailed from 68 different countries. The top five countries that the respective student types consider their national origin are depicted in Table 3.

Table 3

National Origin between International Student Types Enrolled in Fall 2017 Semester

ISSP (N =513)		Non-ISSP (N = 634)	
China	40.0%	China	57.1%
India	11.5%	India	5.4%
Korea, Republic of	7.6%	Vietnam	3.8%
Indonesia	6.0%	Korea, Republic of	3.2%
Pakistan	5.5%	Brazil	3.2%

Primary Major Area of Study

Table 4 depicts the primary major areas of study for the two groups of international students. There is a lot of overlap among the two groups in terms of majors. Management is the most subscribed program among international students, with computer science, economics, and biology as distant runner ups.

Table 4

Primary Major Area of Study between International Student Types for Fall 2017

ISSP (N =513)		Non-ISSP (N = 634)	
Management	60.0%	Management	33.1%
Computer Science	6.4%	Economics	13.4%
Economics	5.8%	Undeclared	10.1%
Undeclared	4.7%	Biology/BioChem	9.9%
Info Technology	3.9%	Computer Science	6.8%
Biology/BioChem	1.9%	Info Technology	3.6%

Table A-1

Mean Performance Measures across Student Types for Fall 2011-16 Cohorts

Fall Cohort	Student Type	First-Year			Completion			
		Ret Rate	Credits Earned*	GPA*	4-Year	5-Year	6-Year	Final GPA
2011	ISSP (<i>n</i> = 43)	79.1%	36.9	2.94	33%	51%	56%	3.15
	Non-ISSP Int'l (<i>n</i> = 135)	82.2%	22.7	2.92	27%	50%	53%	3.29
	Domestic (<i>n</i> = 1122)	78.1%	26.5	2.85	15%	37%	47%	3.21
2012	ISSP (<i>n</i> = 78)	88.5%	29.1	2.97	23%	50%	na	3.24
	Non-ISSP Int'l (<i>n</i> = 144)	85.7%	22.2	2.75	20%	51%	na	3.18
	Domestic (<i>n</i> = 1047)	75.0%	27.2	2.90	18%	39%	na	3.29
2013	ISSP (<i>n</i> = 101)	79.2%	25.3	2.77	25%	na	na	3.43
	Non-ISSP Int'l (<i>n</i> = 142)	78.2%	22.5	2.72	27%	na	na	3.35
	Domestic (<i>n</i> = 1171)	78.2%	26.9	2.88	23%	na	na	3.47
2014	ISSP (<i>n</i> = 143)	77.6%	28.1	2.89	na	na	na	na
	Non-ISSP Int'l (<i>n</i> = 177)	71.8%	24.7	2.73	na	na	na	na
	Domestic (<i>n</i> = 1221)	77.6%	27.8	2.89	na	na	na	na
2015	ISSP (<i>n</i> = 145)	77.9%	28.2	3.04	na	na	na	na
	Non-ISSP Int'l (<i>n</i> = 193)	69.9%	24.1	2.73	na	na	na	na
	Domestic (<i>n</i> = 1295)	79.0%	27.7	2.90	na	na	na	na
2016	ISSP (<i>n</i> = 148)	82.4%	25.8	2.92	na	na	na	na
	Non-ISSP Int'l (<i>n</i> = 135)	77.8%	24.0	2.82	na	na	na	na
	Domestic (<i>n</i> = 1389)	75.8%	28.2	2.93	na	na	na	na

Note: * Credits earned and GPA for first-year are mean values based on those that returned for third semester.