

Office of Research and Sponsored Programs

GRANT Forum Grant Research Administrators' Network Team

June 22, 2022

OFFICE OF RESEARCH AND SPONSORED PROGRAMS



AGENDA

1. ORSP Staffing
2. Kualii PD introduction and timeline and impacts
3. Gift cards
4. GRANT Forum Teams page
5. Update on award setups
6. Summit
7. Core Facilities
8. Future GRANT Forum schedule

1. ORSP Staffing

- **New hire – Virginia ("Ginny") Maki: Assistant Director of ORSP ERA Systems and Training.**
 - **Major focus areas:**
 - leading the Kualu Proposal Development module implementation
 - Overseeing the Award Set Up process (hand off from Preaward to Postaward)
- **Preaward**
 - **1 backfill in process; interviews being conducted**
 - **David Harrison – P/T temp/consultant**
 - **1 new F/T temp position hired: Subaward Administrator (Anne Marie Baker)**
 - **1 new Pre-Award Grant and Contract Administrator I-Kuali Institutional Proposals and Award Actions (Jessica Maron)**
- **Postaward**
 - **1 backfill in process; interviews being conducted**

2. Kualu Research Proposal Development (PD)

Kualu PD Introduction

- **KR PD is the unit and PI facing module of the Kualu Research Software Suite**
- **KR PD will allow PI's to streamline the proposal development, internal routing and approval and submission processes into one system**
- **KR PD will maintain a Dashboard of all proposals prepared and submitted by a PI and represents the first step in the Grant Lifecycle**

2. Kualu Research Proposal Development (PD)

Kualu PD Timeline: Ginny

Add simplified timeline

2. Quali Research Proposal Development (PD)

Kuali PD Impact-Streamlined Proposal Development Processes art UMB

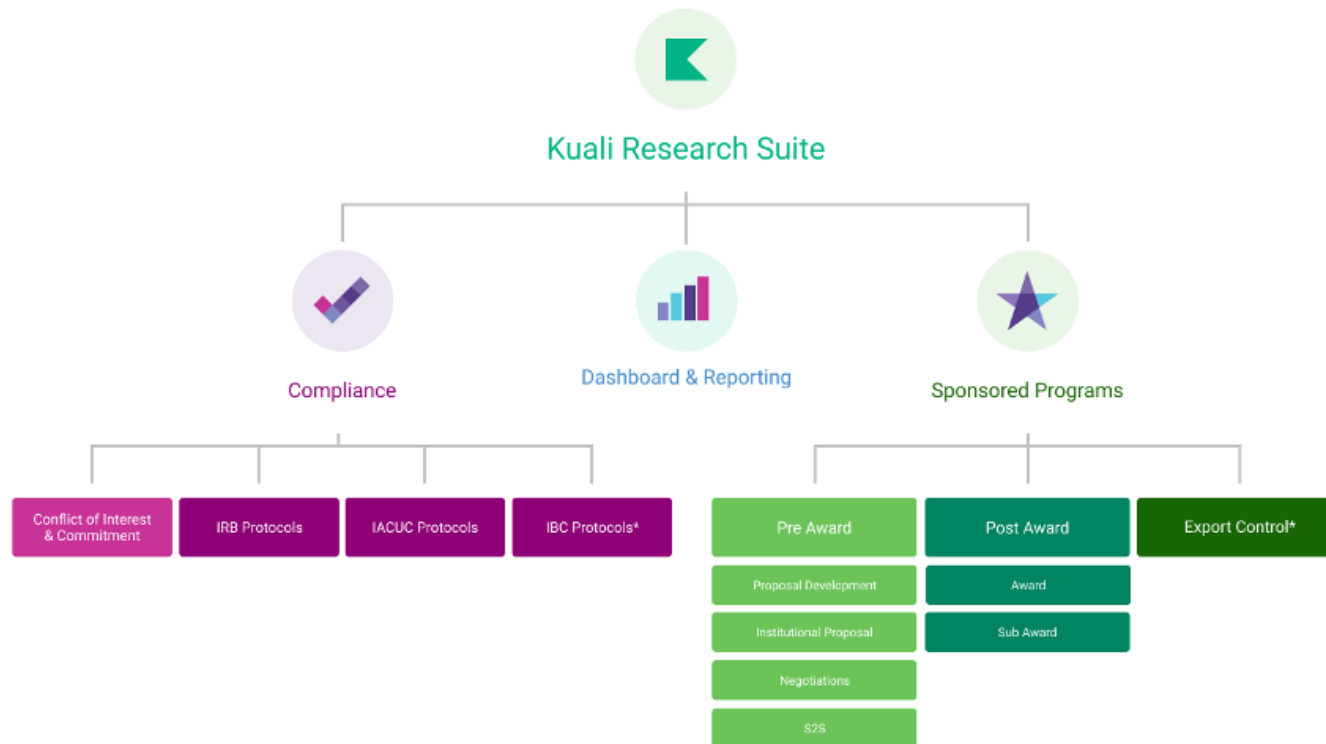
Phase I (2022):

- **Electronic Proposal Initiation and Intent Notification to Depts Units and ORSP**
- **Electronic Proposal Development and Routing**
- **Proposal Approval Workflow (including special approvals i.e. Cost-Share Commitments, co-PI MOUs and**

Phase II (2023):

- **Budget Development Functionality**
- **System-to-System Submissions (grants.gov FOAs)**
- **Complete integration of Quali Research Modules and Dashboard**

2. Kuali Research Proposal Development (PD)



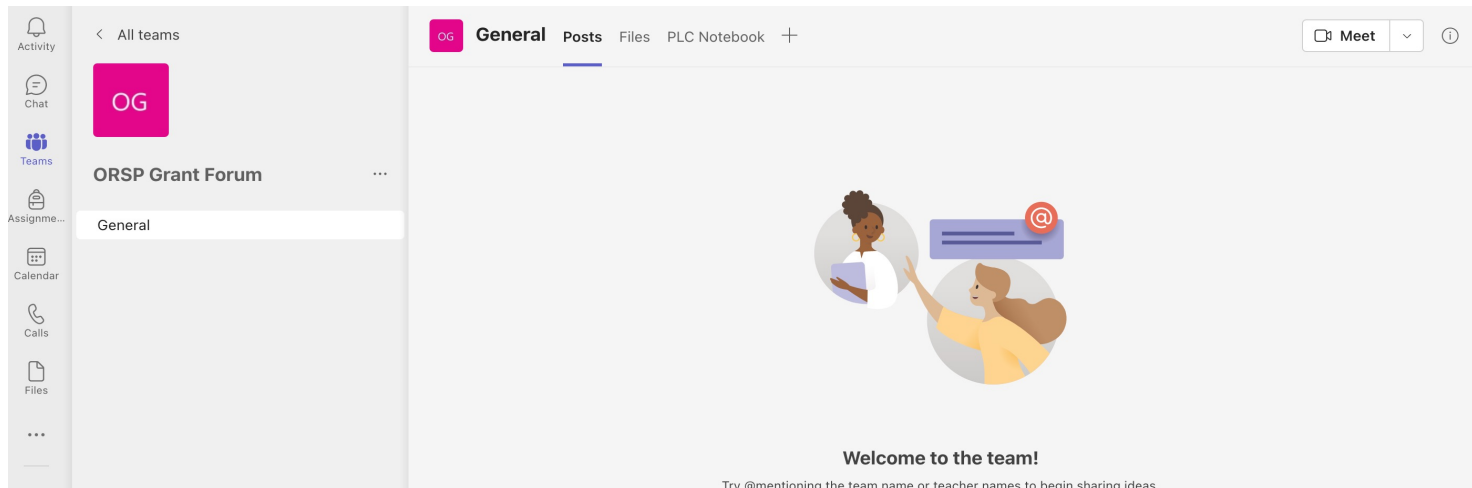
3. Gift Cards

- Announced to F&A Advisory Group 04/14/22
- Replaces the ProCard gift card request process
- US Bank Declining Balance Card via DocuSign
- Gift cards are authorized for research purposes only
- Reviewed and approved by ORSP regardless of funding source
- IRB is required for Human Subjects
- Research justification is required for non-Human Subjects
- Gift card tracking log must be kept and reconciled at the end of the award
- Expense transfers are not allowed
- Payments to individuals in excess of \$100 per person per study per calendar year must be processed through BuyWays

[LINK to Request Gift Cards](#)

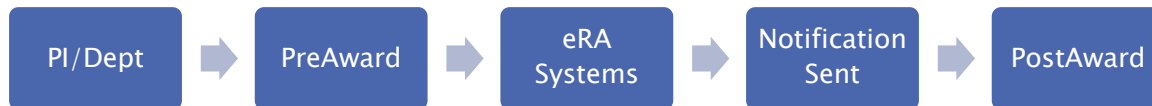
4. Grant Forum MS Teams

- Teams Group – ORSP Grant Forum
- Communication
- Announcements
- Onboarding and other high-level information



5. Update Award Set-up

- Now Under eRA Systems Group in ORSP
- ORSP Award Setup Workflow Overview



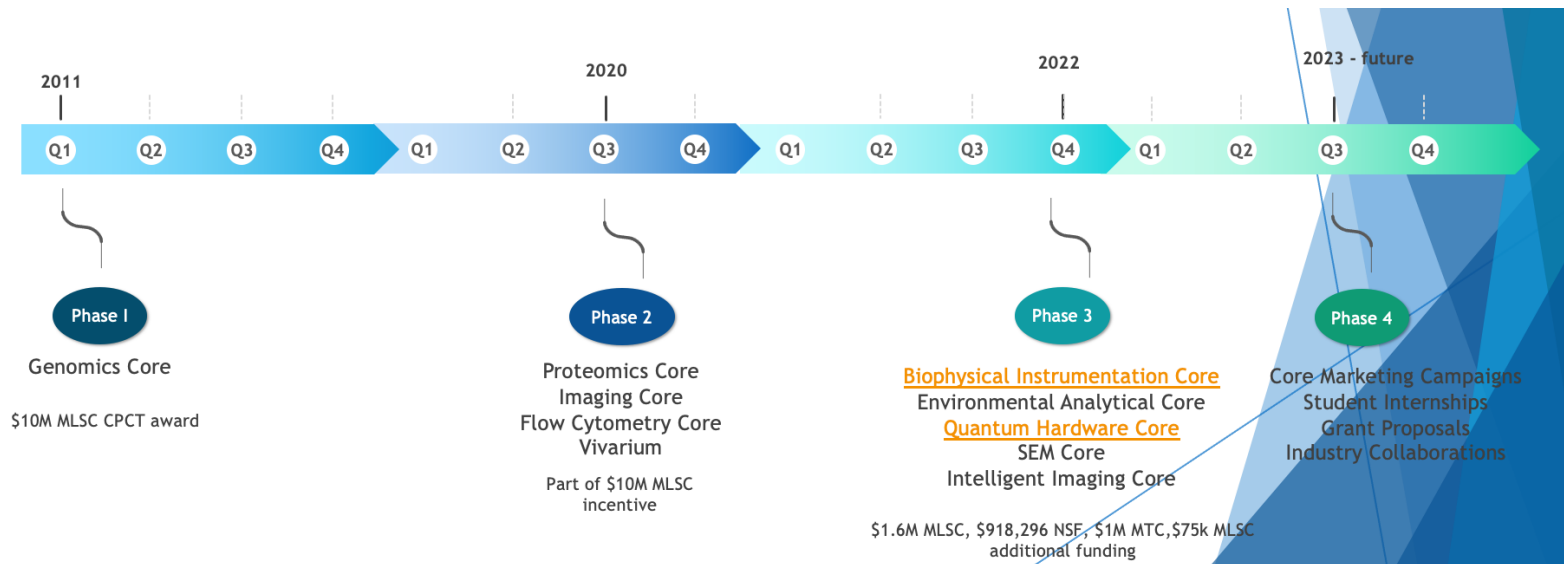
- New Resource – Erin Ryan
- Improving Turnaround Time
 - Goal - within 2 weeks of handoff from PreAward
- Future - Review for Process Improvements

6. Summit

- SUMMIT Updates
- SUMMIT Demo
 - Navigation, Quick Links, Using Filters, Reports
- SUMMIT Grant Related Training Available
 - One on One and Group Training Sessions
 - Contact Ginny: Virginia.Maki@umb.edu
 - Watch for Monthly Drop-in Sessions FY23

7. Research Core Facilities

- ❑ Cutting-edge instrumentation, methodologies and expertise
- ❑ Operating as fee – for – service facilities
- ❑ **Massachusetts Innovation Voucher Program** - a state sponsored program provides industry access to world-class equipment and laboratory facilities thru 90+ UMass core facilities at significantly subsidized rates.

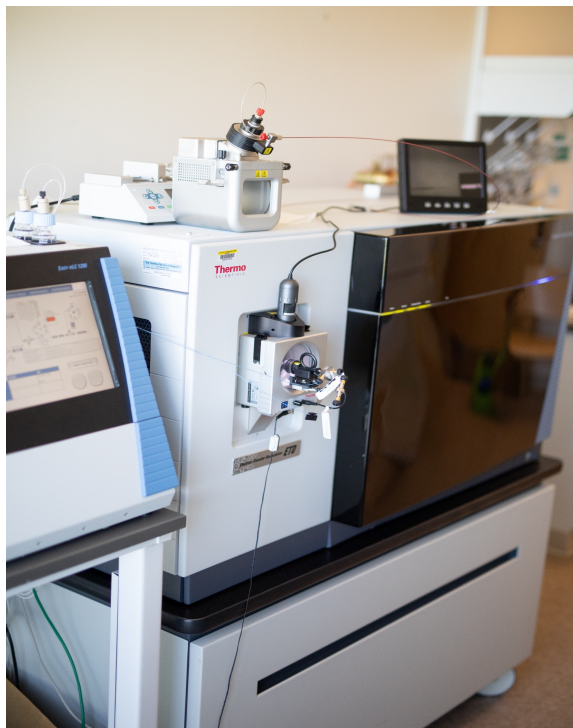


Snapshot of the Innovative Cores in ISC

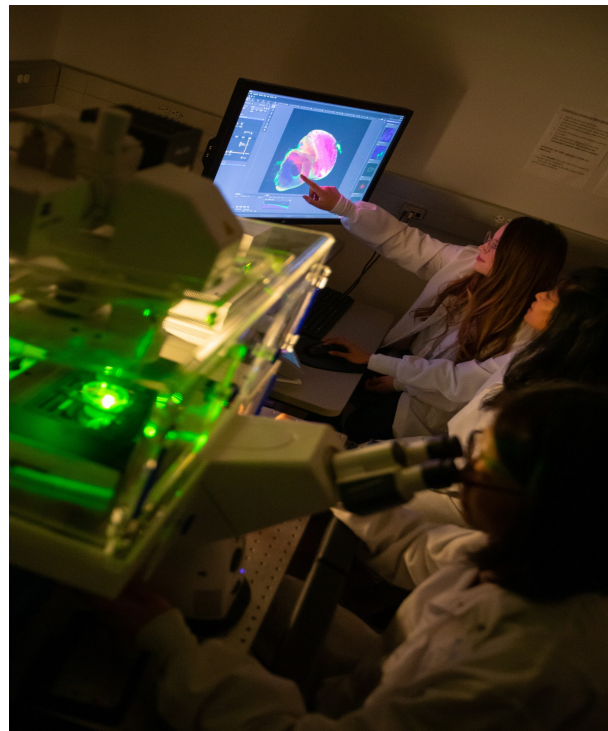


Genomics Core

Snapshot of the Innovative Cores in ISC



Proteomics Core



Imaging Core

Core Facilities Revenue

I. Grant Funding Received by Sponsor

Core Facility PI	Core Facility	NSF	MLSC	MTC
Johannesson, Karen	Environmental Analytical	491,796		
Sa, Niya	SEM	426,500		
Macoska, Jill	Genomics		10,000,000	
Macoska, Jill	Genomics		388,324	
Bell, Matthew	Quntum Hardware			999,000
Haehn, Daniel	Intelligent Image		750,000	
Dowling, Dan	Biophysical Instrumentation		1,647,201	
Evans, Jason	Proteomics		722,393	
		918,296	13,507,918	999,000
			TOTAL Grant Funds	\$15,425,214.00

II. Revenue Generated thru External Companies

FY20 - FY21 Core	Revenue
Proteomics	203,239.22
Genomics	117,264.10
Flow Cytometry	16,862.62
Imaging	26,806.16
Environmental Analytical	49,200.00
TOTAL	\$413,372.10



Who are Cores industry & academic partners?



8. Future Grant Forum

August –TBA

Topics to Cover

- Award set-ups
- Award Kick-Off
- Kualo user testing

QUESTIONS

[Matthew Meyer](#)

Associate Vice Provost for Research
and Director of ORSP

[Rebecca Hanson](#)

Assistant Director of ORSP
Postaward Support Services

[Virginia Maki](#)

Assistant Director of ORSP eRA
Systems and Training

[Shala Bonyun](#)

Associate Director of ORSP
Preaward Support Services

[Tracey Poston, PhD](#)

Assistant Director of ORSP Research
Compliance and Integrity

[Serena Wang](#)

Research Core Facilities &
Operations Manager of ORSP