

Marine Operations Safety & General

Docks

1. No dumping or disposal of anything overboard, including but not limited to sewage, gasoline, oil, paints, stains, varnishes, chemicals, etc.
2. No open flames, flammable remover or paint burners will be used for any purpose, in and around the Dock. No barbecuing except in such designated land areas.
3. Hoses and power lines must be used and stored so as not to pose a threat of entanglement or tripping.
4. Children under 12, must be accompanied by instructors, guardians or parents at all times.
5. All activities at the Dock shall be limited to posted hours of operations unless otherwise authorized by the Dockmaster.
6. Parking near the entrance to the Dock on University Drive shall be limited to live parking in the drop-off and pick-up cutout next to Salt Water Pump-house for personnel and/or supplies. Such parking shall be done so as not to block access for emergency vehicles.
7. Boat Owner/Operators shall not store supplies, materials, accessories, or debris upon floats or fingers and shall not construct there on any lockers, chest cabinets, steps, ramps or other structures.
8. Berthing, tie-ups, and tender locations will be assigned by the Dockmaster in a fair and equitable manner.
9. No overloading of floats or gangways at the Dock.
10. Bicycles, in-line skates, skateboards and such are not permitted to be ridden on the Dock.
11. Noise shall be held to a minimum at all times. Boat Owners/Operators shall use discretion in operating motors, generators, tools, radios, televisions, etc., so as not to interfere with other programs.
12. Pets shall be leashed when not on board a vessel. Pets shall not be allowed to relieve themselves at or around the Dock, and owners shall be responsible for immediate and thorough cleanup of mess caused by a pet.
13. Disorder, depredation, or incredulous conduct by a boat Owner/Operator or his visitors that might injure a person, cause damage to property or harm the reputation of UMass Boston, shall be cause for immediate removal from the facility.
14. Bare feet are prohibited, examples of proper footwear include boat shoes, sneakers, and cover toe shoes.

Vessel Operation

1. Boat Owner/Operator will cause its vessel to approach and depart the Dock in careful, seamanlike manner so as to prevent injury or damage caused by collision, wake or other means.
2. The Owner/Operator of any vessel involved in an accident which results in personal injury, death, or property damage (over \$500) shall immediately notify the State Environmental Police and file the appropriate accident report, forms located at the Division of Marine Operations, within the required time frame. (2 days for fatality; 5 days for all others).

3. Lines for securing vessels shall be provided by Owner/Operator and shall be of such size and quality as to secure the vessel safely to prevent damage or injury. Vessels left insecurely tied, in the opinion of the Dockmaster may be secured by the Dockmaster.
4. Vessels must have appropriately sized and functioning bilge pumps. A vessel in sinking or swamping condition may be pumped by the Dockmaster. This regulation does not impose any duty or obligation on the Dockmaster to do so.
5. All vessels moored, docked or otherwise at the dock during the season shall provide an access key or lock combination to the Dockmaster.
6. When a vessel will be absent from the dock for more than 48 hours, boat Owner/Operator shall notify the Dockmaster. Float plans for extended periods of time at sea are encouraged to be filed with appropriate shore-side contact, copies located in the Division of Marine Operations.
7. In the event of a predicted major storm, boat owner/operators must take necessary precautions, as outlined in Storm Plan, to ensure safety of vessels and Dock.
8. All boating rules consistent with USCG, Harbor Master, and State Environmental Police are to be observed, as well as familiarization with "Rules of the Road". Certification for completion of Boating Safety and Basic Navigation courses is strongly encouraged for all Owner/Operators of vessels at facility.

Powerboat Usage Policy

The Division of Marine Operations at UMass Boston owns and operates a small fleet of vessels including a USCG inspected passenger vessel, (M/V *Columbia Point*), Un-inspected 6 - passenger (*Landing craft*) and smaller work boats. Typically, all vessels are used in a chartering capacity; otherwise, they are utilized for internal purposes.

Given the commercial usage of the fleet we yield to and adhere to the laws and regulations placed upon this activity by the United States Coast Guard (CFR 49, Sub chapter T) which requires that a licensed captain and a trained, qualified deckhand be onboard at all times to ensure safe operation of the vessel.

Both the M/V *Columbia Point* and the *Landing Craft* have documentation on board that outline the requirements and restrictions particular to each vessel. We meet or exceed these so as to operate in the safest manner possible.

Neither the M/V *Columbia Point* nor the *Landing Craft* is ever operated by non-USCG licensed individuals for any reason. We do not employ USCG licensed captains whose license is less than a fifty gross ton capacity. None of our power boats are available for recreational use by the general public, nor are they ever to be operated by the general public.

With regard to the smaller work boats being used for internal purposes, we only allow trained and qualified employees of Marine Operations to operate them and only under specific conditions and operating ranges.

No vessel in our fleet is ever loaded with passengers beyond the legal limit defined by the USCG for that vessel.

Cell phone use and other electronic devices use is prohibited in the pilothouse while in operation of vessels except for emergency purposes.

UMass Boston is a Drug Free Workplace

Storm Plan

The weather terms below as defined by the National Oceanic and Atmospheric Administration - National Weather Service, describe weather conditions that require special precautions.

Gale Warning: wind speeds of 34 to 47 knots
Storm Warning: wind speeds of 48 knots and above
Hurricane: wind speeds of 64 knots and above

1. Owner/Operator or designee shall take necessary steps to maintain an open line of communication with the Dockmaster by phone, radio or in-person and should be available on short notice to report to the Docks in the event of an emergency.
2. All vessels shall have additional safety equipment on hand with the ability to deploy. Including but not limited to: line, ground tackle, anchors and shackles.
3. In the event of a natural disaster to the Dock facility, it will be the sole responsibility of Owner/Operator to remove their vessel(s) from harm's way. Alternative mooring sites will be secured by the Dockmaster in advance.

Waterfront Recreation:

- Program participants must sign a Waiver Release form prior to participating in the program which should contain such language as: Participants accept the inherent risks associated with this activity including but not limited to: adverse weather conditions, tidal extremes, and the activities of other vessels. In addition, participants agree to operate the program's boats in a safe and prudent manner at all times.
- No participant shall be allowed access to program vessels unless s/he is wearing a USCG approved Type III Personal Flotation Device (PFD).
- At no time shall the number of persons exceed the number of PFD's in any vessel.
- The Water Recreation area is Dorchester Bay; south of a line from the JFK library dock (John T. Fallon State Pier) to the Thompson Island dock. The area does not include the Neponset River upstream of the gas tank. (see Fig.1).
- Passage within the Savin Hill Yacht Club mooring field is allowed only when necessitated by tidal conditions.
- The Water Recreation area may be increased or decreased at the discretion of supervisor in conjunction with the University.
- Any injury or property damage is to be reported immediately to University upon returning to the dock.
- Reckless behavior or intentional misuse of program equipment will result in the suspension of Water Recreation privileges.
- Water Recreation shall be cancelled any time the supervisor in consultation with the University deems it an appropriate response to prevailing conditions.

Orientation/Qualifications

- **Kayaks:**
Students will be fitted for a lifejacket and paddle. Students will be shown a safe location for changing and any personnel items that should be left a shore. Marine Operations does not accept responsibility for any lost or stolen items. Brief safety discussion will be given including universal sign of distress at sea.

Instructions will be given on proper paddling techniques including getting in and out of a kayak, getting into a capsized kayak. Staff will assist student into kayaks, launching and retrieval.

- **Stand-up Paddle Boards (SUP's):**
Students will be fitted for a lifejacket and paddle. Students will be shown a safe location for changing and any personnel items that should be left a shore. Marine Operations does not accept responsibility for any lost or stolen items. Brief safety discussion will be given including universal sign of distress at sea.
Instructions will be given on proper paddling techniques including getting on and off of a SUP, getting onto a capsized SUP. Staff will assist students onto SUP's, launching and retrieval.

- **Sailboats:**

Students will be fitted for a lifejacket and paddle. Students will be shown a safe location for changing and any personnel items that should be left a shore. Marine Operations does not accept responsibility for any lost or stolen items. Brief safety discussion will be given including universal sign of distress at sea.

Solo Sailor Qualification.

Each sailing student will be asked to define the following:

Bow, stem, port, starboard, fore, aft, athwart, beam, standing rigging, running rigging, stays, shrouds, mast, boom, tang, chain plate, turnbuckle, gooseneck, centerboard, keel, rudder, tiller, cleat, chock, halyard, sheet, traveler, boom vang, pennant, painter, outhaul, downhaul, block, sheave, shackle, tack, clew, head, luff, foot, leech, tell-tale, windward, leeward, port tack, starboard tack, irons, close hauled, close reach, beam reach, broad reach, run, by the lee, coming about, jibing, weather helm, lee helm, broach, unintentional jibe, head up, fall off, hike out, luffing, backwind, sailing area, and shoals

Each student will be asked to outline the procedures to follow for: man overboard; capsizing; grounding, approaching squall; close quarters with moored boat; right of way; red-right-return.

Each student will be asked to demonstrate the following:

Bowline, cleat, half-hitches, figure eight, boarding, rigging, getting underway, coming about, jibing, getting out of irons, weight placement, approaching dock or mooring, making a landing, de-rigging, securing boat.

Appointments:

Scheduled lessons must be on time. Due to rigging and preparation, sail time is limited. Lessons run approximately 1 hour. A boat will only be held for 10 minutes past scheduled appointment unless we have received a phone call and other arrangements have been made. UMass Boston Sailing Instruction Booklet found here: [UMASS Sailing Instruction Booklet.pdf](#)

Appointments should be scheduled at least 24 hours in advance. Those with appointments have priority over walk-ons.

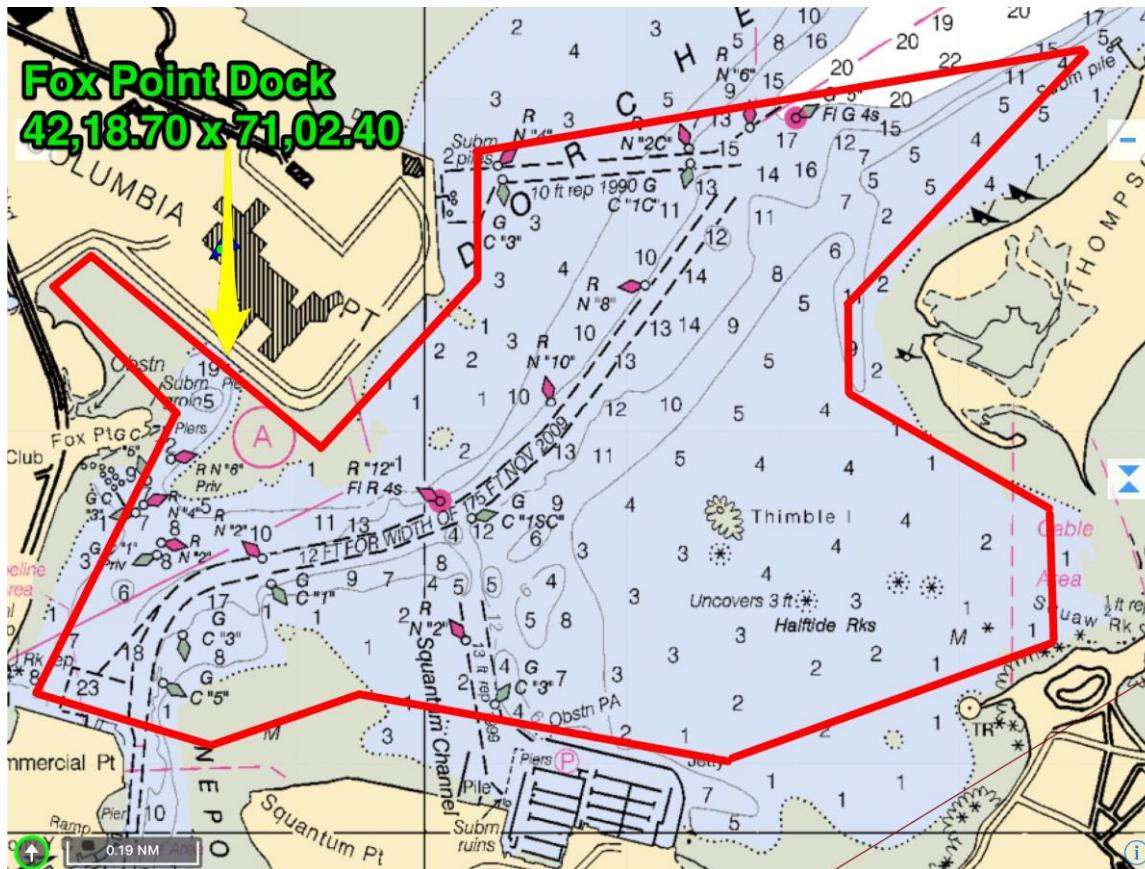
Maximum of two people per lesson. For the most efficient and productive lesson, one-on-one instruction is ideal. Sailors who have achieved solo status will be allowed 2 guests.

Solos who wish to go beyond the designated Sailing Area must give desired course and be approved by Assistant Sailmaster.

Rigging is key to becoming a sailor, and to the lesson. Boats will not be rigged for a lesson. Upon returning to dock, you are expected to remove all personal belongings and dispose of trash.

(Fig 1.) Water Recreation Area

The Water Recreation Area is subject to change based upon weather conditions. On optimum days the sailing area is Dorchester Bay south of the line from the JFK pier to the Thompson Island pier. The area does not include the Neponset River upstream of the gas tank on Commercial Point.



Terms:

Dock - the Fox Point facility as defined by Chapter 91 waterways regulations extending 100 feet from the tidal boundary between high tide and low tide.

Owner/Operator - any university or non-university vessel and her crew who moors their vessel here at a UMass Boston facility and agrees to the conditions set forth.

Dockmaster - Division of Marine Operations Dockmaster, Assistant Dockmaster or designee.